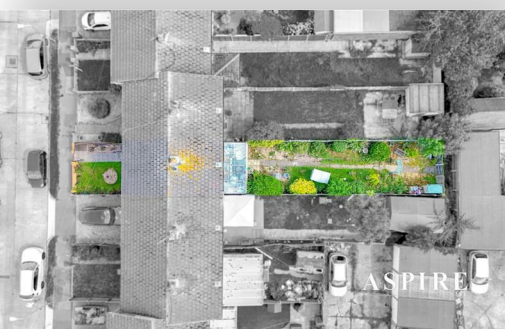


To arrange a viewing contact us
today on 01268 777400



Bramble Road, Eastwood Guide price £300,000

Aspire Estate Agents are delighted to present this bright and spacious three-bedroom terraced home, ideally located on the peaceful Bramble Road in Leigh-on-Sea.

GUIDE PRICE- £300,000-£325,000

Perfectly positioned in a quiet residential area, this property offers generous living space, a beautiful rear garden extending over 65ft, a garage, and a large conservatory. While the home would benefit from some updating, it offers huge potential for buyers to put their own stamp on it and create something truly special.

The home opens with a welcoming porch leading into a light-filled lounge, perfect for relaxing or entertaining. A separate dining room sits to the rear, with double doors opening into a spacious conservatory – creating an ideal space for family gatherings or enjoying garden views year-round. The fitted kitchen offers ample worktop space, storage, and access to both the conservatory and rear garden.

Upstairs you'll find three well-proportioned bedrooms, two of which are generous doubles. All bedrooms are bright and airy, with the two larger rooms benefiting from fitted storage. A family bathroom completes the first floor.

The front garden creates an attractive approach to the property, while the rear garden is a real highlight – stretching over 65ft, mainly laid to lawn, and offering plenty of space for outdoor entertaining, play, or gardening. At the far end, you'll find a detached garage with rear access, perfect for parking or additional storage.

Bramble Road is a quiet and friendly street within walking distance of local shops, schools, and amenities. Leigh-on-Sea's bustling Broadway, seafront, and train station are just a short drive away, offering direct links

www.aspireestateagents.co.uk

Porch

5'8" x 4'0" (1.73 x 1.24)

Lounge

16'7" x 13'0" (5.07 x 3.98)

Diner

11'2" x 7'4" (3.41 x 2.25)

Kitchen

11'8" x 6'10" (3.58 x 2.10)

Conservatory

16'0" x 8'5" (4.90 x 2.57)

Landing

8'11" x 5'7" (2.73 x 1.72)

Bathroom

10'5" x 5'7" (3.18 x 1.72)

Master Bedroom

13'5" x 10'3" (4.11 x 3.14)

Bedroom 2

10'5" x 10'0" (3.18 x 3.06)

Bedroom 3

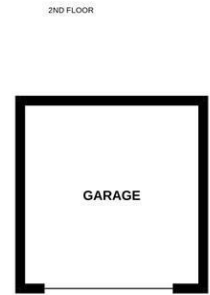
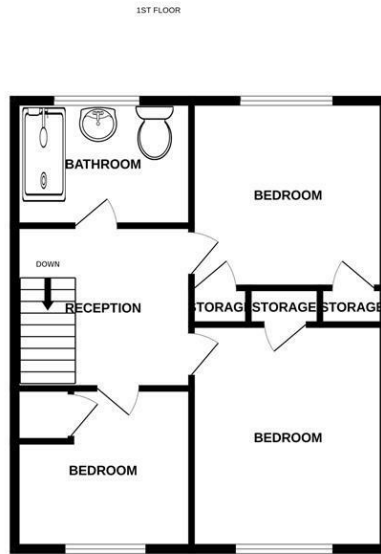
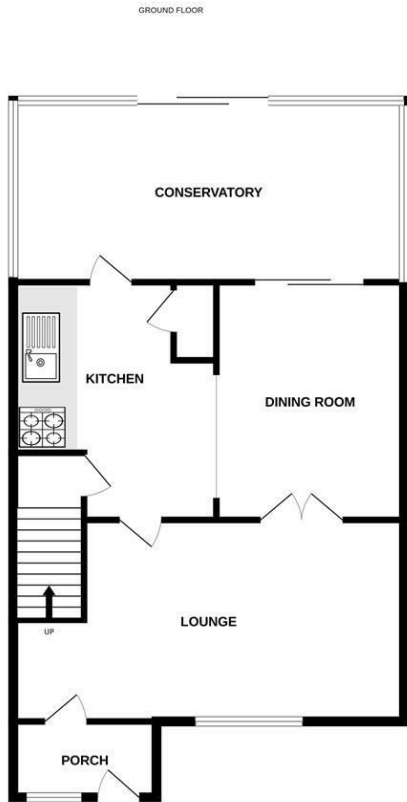
10'9" x 6'1" (3.28 x 1.86)

Garage

16'8" x 7'10" (5.10 x 2.41)

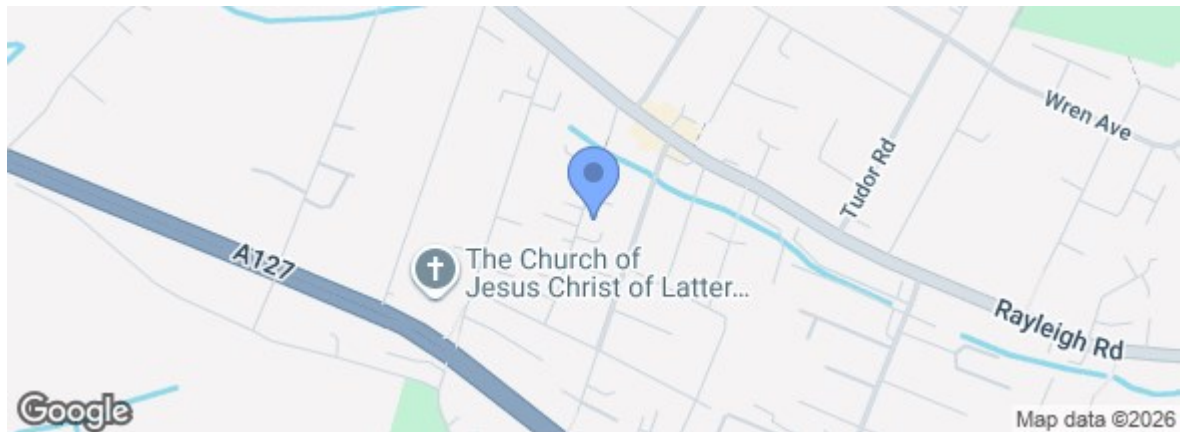
Garden

66 (20.12m)



Whilst every attempt has been made to ensure the accuracy of the floorplan contained here, measurements of doors, windows, rooms and any other items are approximate and no responsibility is taken for any error, omission or mis-statement. This plan is for illustrative purposes only and should be used as such by any prospective purchaser. The services, systems and appliances shown have not been tested and no guarantee as to their operability or efficiency can be given.
Made with Metropix ©2025

Energy Efficiency Rating		Current	Potential
Very energy efficient - lower running costs			
(92 plus)	A		
(81-91)	B		
(69-80)	C		
(55-68)	D		
(39-54)	E		
(21-38)	F		
(1-20)	G		
Not energy efficient - higher running costs			
England & Wales EU Directive 2002/91/EC			
Environmental Impact (CO ₂) Rating		Current	Potential
Very environmentally friendly - lower CO ₂ emissions			
(92 plus)	A		
(81-91)	B		
(69-80)	C		
(55-68)	D		
(39-54)	E		
(21-38)	F		
(1-20)	G		
Not environmentally friendly - higher CO ₂ emissions			
England & Wales EU Directive 2002/91/EC			



Under the Property Misdescriptions Act 1991 we make every effort to ensure our sales details are accurate but they are a general outline and do not constitute any part of an offer or contract. Any services, equipment and fittings have not been tested and no warranty can be given as to their condition. We strongly recommend that all the information provided be verified by your advisors and in particular, measurements required for a specific purpose such as fitted furniture or carpets. Please tell us if you have any problems and members of our branches will help either over the phone or in person. A copy of our complaints procedure is available on request. The details are issued on the strict understanding that any negotiations in respect of the property named herein are conducted through Aspire Estate Agents.